

## Other useful resources for deaf services

### Scottish Council on Deafness (SCoD)

[www.scod.org.uk](http://www.scod.org.uk)

Tel: 0141 248 2474

### John Denmark Unit – National Centre for Mental Health and Deafness

[jdu@gmw.nhs.uk](mailto:jdu@gmw.nhs.uk)

Tel: 0161 772 3400

Minicom: 0161 772 3407

### Lothian Deaf Community Mental Health Services (for Lothian only)

[ldcmhs@deafaction.org](mailto:ldcmhs@deafaction.org)

Tel: 0131 556 3128

### Lothian Deaf Counselling Service (for Lothian only)

Tel: 0800 804 7462

### Hearing Concern

[www.hearingconcern.org.uk](http://www.hearingconcern.org.uk)

### Action on Hearing Loss

[www.actiononhearingloss.org.uk](http://www.actiononhearingloss.org.uk)



## The Team



**Dr Deborah Innes**

Lead Clinician



**Debbie O'Reilly**

South East and West



**Lindsay Leece**

North



**Lisa Truffelli**

Team Administrator

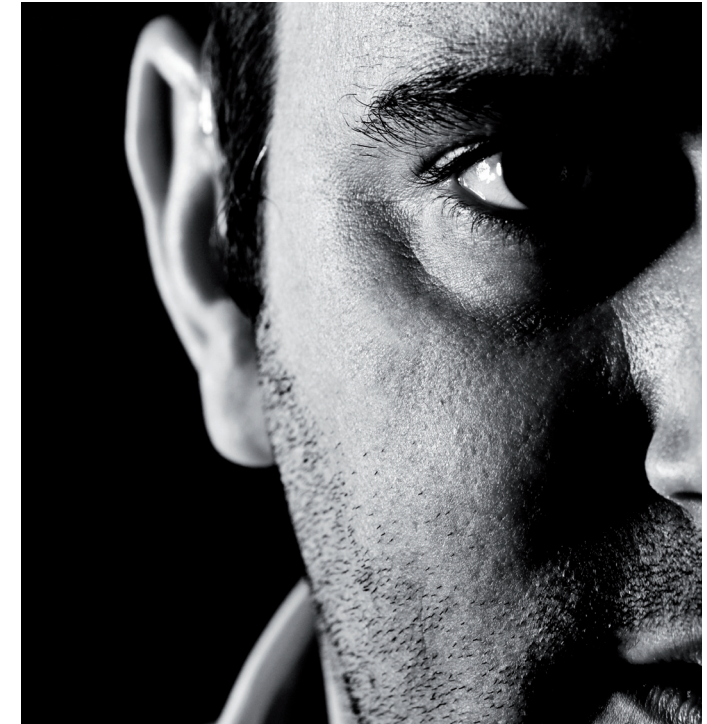
Staff can communicate in BSL, SSE, Deafblind manual and Spoken English.



Mental Health Management offices  
Block 1/2, The Residences  
St John's Hospital, Howden Road West  
Livingston, EH54 6PP

Tel: 01506 523671

[www.nhslothian.scot.nhs.uk/mhdeafservice](http://www.nhslothian.scot.nhs.uk/mhdeafservice)



# Scottish Mental Health Service for Deaf People



## Who are we?

We are a national service hosted by NHS Lothian. We are committed to providing specialist support in Scotland for deaf people with mental health problems across Scotland.

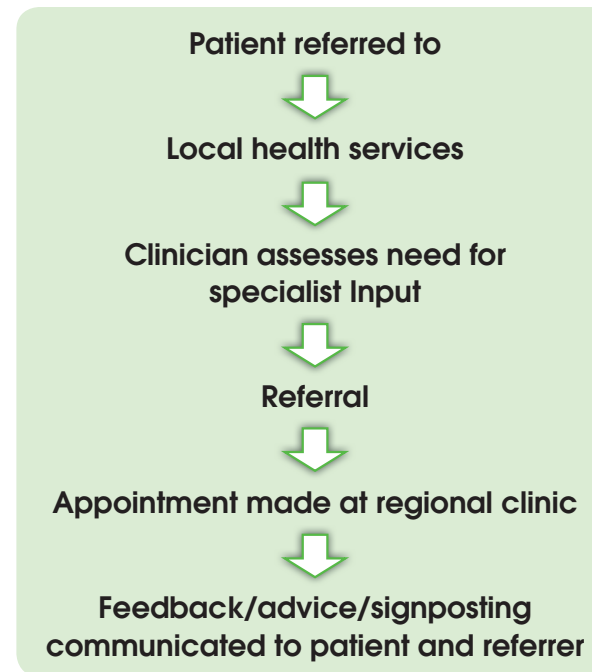
## What do we do?

We provide a high quality service for people with hearing impairment suffering from a mental disorder. Predominantly, we are a consultancy and liaison service providing the following:

- Advice on local management of deaf people with moderate or severe mental health problems which present challenges in assessment and/or treatment across Scotland
- Assessment and/or treatment of patients at request of or in liaison with local clinicians on an outreach basis
- Advice/assessment of the possible requirement for specialist inpatient treatment
- Provision of training for mental health professionals in deaf mental health issues.

**Working to provide easy access to mental health services for deaf people in Scotland.**

## Pathway



## How to refer?

Referrals can be made in writing and referral forms can be downloaded from the website [www.nhslothian.scot.nhs.uk/mhdeafservice](http://www.nhslothian.scot.nhs.uk/mhdeafservice) or by calling the team administrator on **01506 523 671** or email [mhdeafservice@nhslothian.scot.nhs.uk](mailto:mhdeafservice@nhslothian.scot.nhs.uk)

Telephone calls to discuss possible referrals are always welcome.

## What happens next?

Patients will be seen by Advanced Nurse Practitioners on an individual basis for assessment of mental state and diagnosis in complex cases.

Specific time-limited treatment may be offered.

Support for local teams in providing direct patient care. Advice given regarding further treatment and signposting to local deaf organisations.

Assessment of patients for inpatient treatment in the John Denmark Unit – National Centre for Mental Health and Deafness.

Liaison with inpatient team.

Facilitate and support discharge.

